

CERTIFIED LAND CORNER RECORDATION

LOCATION

S.10 | S.11
S.15 | S.14

T.14N., R.65W.
6th P.M.

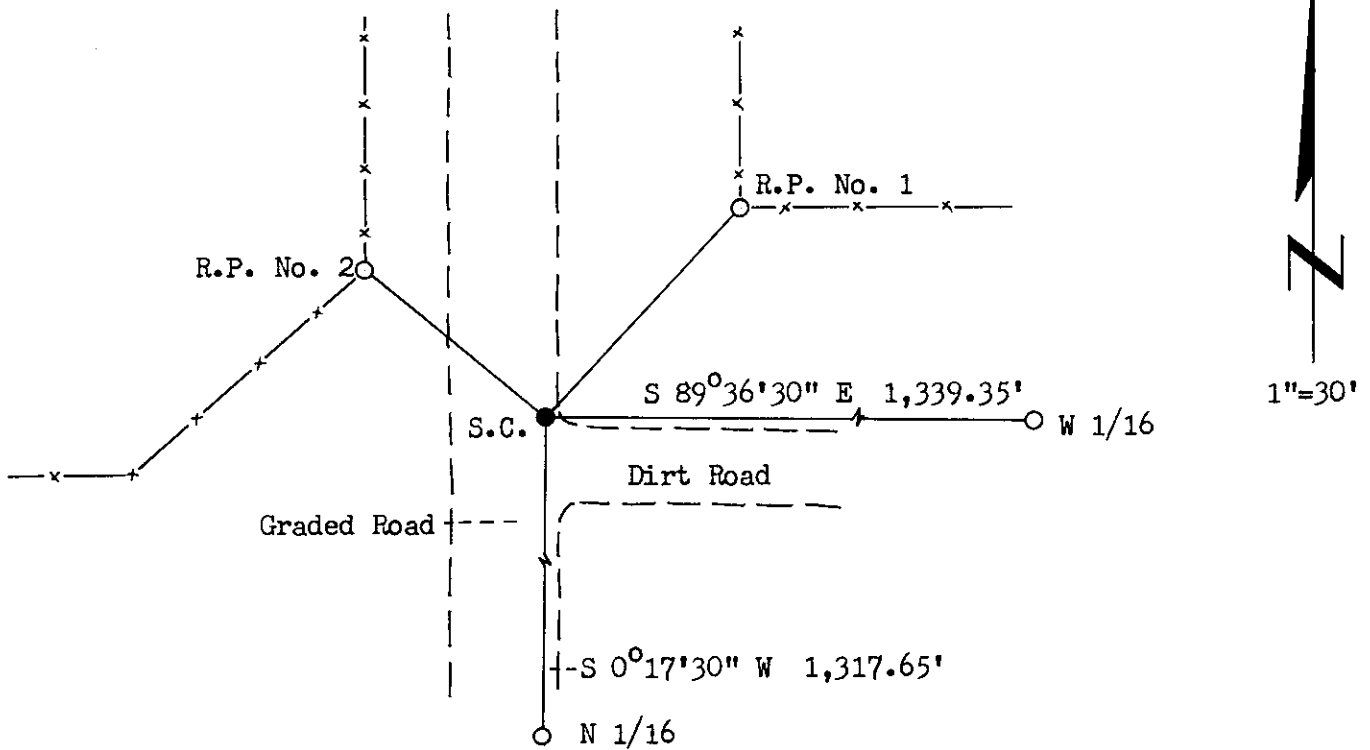
DESCRIPTION OF CORNER EVIDENCE FOUND, AND ORIGINAL RECORD (If known)

1. No corner monument found.
2. Corner position determined from ties shown in County Surveyor's Field Book No. 52 at page 89.
3. G.L.O. record, "Set Granite Boulder, 18 x 8 x 8 for Cor. to 10 11 14 & 15".

DESCRIPTION OF MONUMENT AND ACCESSORIES ESTABLISHED TO PERPETUATE THE ORIGINAL LOCATION OF THIS CORNER:

1. Corner falls in graded road, no monument set.
2. R.P. No. 1 - A 5/8" dia. x 24" long rebar with Surv KAP bears N 42° 54' E, 44.27 feet distant.
R.P. No. 2 - A 5/8" dia. x 24" long rebar with Surv KAP bears N 50° 44' W, 36.12 feet distant.

SKETCH, WITH COURSE AND DISTANCE TO ADJACENT CORNER IF DETERMINED IN THIS SURVEY. (May Sketch or Paste Reproduction on Reverse Side.)



I, R.L. Hudson certify that I have carefully performed ~~or reviewed~~ the work done on the diagrammed corner as reported on this recordation form and approve the same.

R.L. Hudson Wyoming L.S. No. 519
Signature of Surveyor Registration No.

STATE OF WYOMING,
Office of Clerk and Recorder,
County of Laramie

This "corner record" was filed for record on the 23rd day of May, 1972, was noted on the cross-index plat and is assigned page No. 14-65, in book No. 5096.

Jody B. Hillman
County Official

Cross Index No. _____	T. _____	R. _____	Mer. _____
_____	T. _____	R. _____	Mer. _____
_____	T. _____	R. _____	Mer. _____
_____	T. _____	R. _____	Mer. _____
_____	T. _____	R. _____	Mer. _____
_____	T. _____	R. _____	Mer. _____
_____	T. _____	R. _____	Mer. _____

The State of Wyoming }
County of Laramie } SS

This instrument was filed for record
at 3:07 o'clock P.M. on the
23rd day of March
A. D. 19 22 and duly recorded in
Book on page



County Clerk & Ex Officio Register of Deeds
By _____ Deputy